

ISSUE	MODIFICATIONS	OCN	APPD	DATE	NOTES
1	Production release	----	AR	25/01/23	
2	Master PCB was missing in Issue 1, now added	----	AR	04/05/23	



GLEN DIMPLEX RESEARCH & DEVELOPMENT
 HEATING AND VENTILATION IRELAND
 Barn road, Dunleer, Co.Louth, Ireland. Tel: +353(0)41 6872000

THIS DRAWING IS SUPPLIED IN CONFIDENCE AND THE COPYRIGHT THEREOF IS THE PROPERTY OF GLEN DIMPLEX: IT MUST NOT BE USED BY A THIRD PARTY WITHOUT PRIOR PERMISSION. © 2023

DRAWN BY AR	DATE 25/01/2023	SCALE	HOLE TOL +/-0.05	GEN TOL 0 +/-0,4
APP'D BY	DATE	DIM IN mm	ANGLES +/-0.5°	0,0 +/-0,2 0,00+/-0,1

PROJECT **E-MATRIX ENGINE RGB**

TITLE **ASSEMBLY**
 NO. OFF:

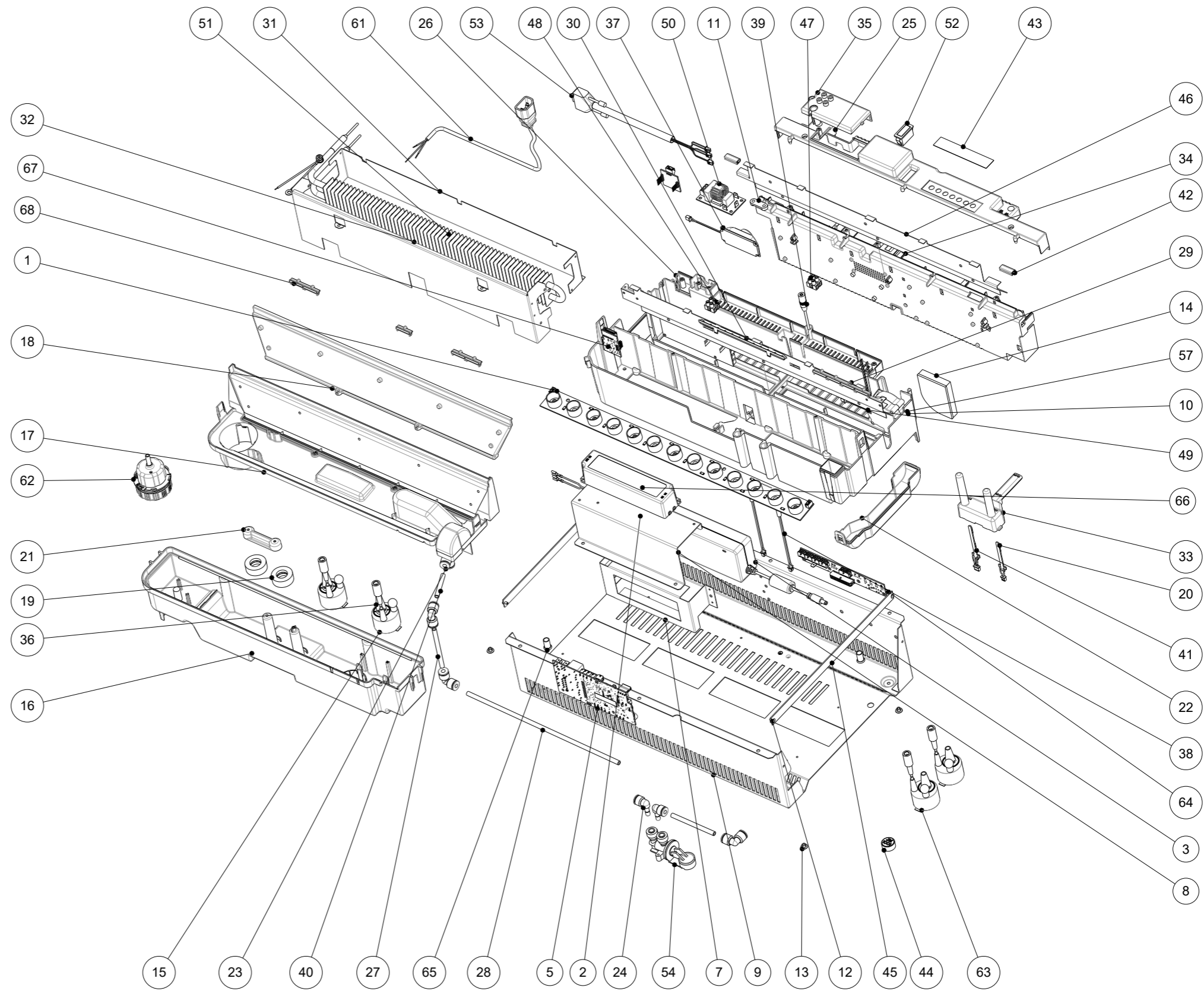
DO NOT SCALE
 IF IN DOUBT ASK



MATERIAL -----
 FINISH -----
 R.o.H.S. and POP compliant
 All materials must comply with the requirements of European Directive 2015/863/EU (RoHS) and Regulation No. 2019/1021 (POP) on the restriction of the use of certain hazardous substances

DRG NO **400001290**
 A3
 Sht of

No.	Part Number	Part Description	Qty.
1	100000294	RGB+YELLOW LD BOARD	1
2	100000305	SOY PSU AC CORD	1
3	100000310	5A PSU	1
4	100000461	CONNECTION PCB	1
5	100001134	MASTER PCB	1
6	100001148	LED DRIVER BOARD RGB	1
7	100002203	SOY PSU BRACKET	1
8	300000621	LED PSU Bracket	1
9	300001782	BASE WRAP	1
10	300001847	Fan Plate	1
11	01/20928/0	CABLE CLAMP MOULDING	1
12	05/50017/0	3.2 X 6.5mm POP RIVET	4
13	1/29876/0	HOLE PLUG	4
14	1/67007/0	FILTER	1
15	1/70852/0	GLASS DISC TRANSDUCER	2
16	1/71125/0	SUMP	1
17	1/71127/0	NOZZLE BASE	1
18	1/71138/0	NOZZLE	1
19	1/71140/0	FLOAT MAGNET	2
20	1/71141/0	MAX REED SWITCH	1
21	1/71143/0	FLOAT STOPPER	1
22	1/71164/0	FAN HOUSING	1
23	1/71464/0	L UNION CONNECTOR 1/4"	4
24	1/71488/0	STEM ELBOW 1/4	2
25	1/71490/0	ELECTRONICS COVER	1
26	1/71491/0	BASE HOUSING	1
27	1/71495/3	80mm HOSE	2
28	1/71495/4	290mm HOSE	1
29	1/71711/0	Mist Baffle Slider	4
30	1/71712/0	MIST BAFFLE HOLES	1
31	1/71750/0	REAR BAFFLE	1
32	1/71751/0	FRONT BAFFLE	1
33	1/71757/0	REED SWITCH HOLDER	1
34	1/71779/0	ELECTRONICS MOULDING	1
35	1/71781/0	ACCESS COVER	1
36	1/71816/0	TRANSDUCER CONE	2
37	1/71819/0	SPEAKER	1
38	1/71931/0	TRANSDUCER EXT WIRE	2
39	1/71937/0	BLUETOOTH SOCKET WIRE	1
40	1/72145/0	45mm HOSE	1
41	1/72451/0	MIN FLOW REED SWITCH	1
42	1/73078/2	LED BOARD INSULATOR	2
43	1/73624/0	BLANK DECAL	1
44	1/73684/0	ABSORBTION VALVE SPONGE	1
45	1/73937/0	SIDE BRACE	2
46	1/73950/0	LED BAFFLE MATRIX	1
47	2/15108/0	TERMINAL BLOCK	1
48	2/15368/0	TERMINAL BLOCK	1
49	2/62624/0	MK3 LED BAFFLE ASSEMBLY	1
50	3/22867/0	10amp CHOKE	1
51	3/23159/0	200W ELEMENT	1
52	3/23271/0	BLANK SWITCH	1
53	3/23591/0	DC WIRE - MODULE	1
54	3/23608/0	ABSORBTION VALVE	1
55	3/23712/0	LED DRIVER BOARD - YELLOW	1
56	3/23712/0	LED DRIVER BOARD YELLOW	1
57	3/23837/0	3000RPM IP55 DC FAN	1
58	3/23888/0	3W JST 3W SM JST	1
59	3/23889/0	2W JST TO 2WSM JST	1
60	3/23892/0	MAIN PCB MK3	1
61	3/23910/0	C14 SHORT CORD	1
62	4/19193/0	FILL CAP ASSY	1
63	4/19267/0	SPARE CONE TRANSDUCER	2
64	5/50140/0	M3 Standoff	4
65	5/50178/0	M6 RIVNUT	2
66	100000593	LED PSU E-MATRIX III	1
67	100001148	LED DRIVER BOARD RGB	1
68	01/71711/0	MIST BAFFLE SLIDER	3



THIS DRAWING IS NOT UNDER QC CONTROL

GLEN DIMPLEX RESEARCH & DEVELOPMENT
 HEATING AND VENTILATION IRELAND
 Barn road, Dunleer, Co.Louth, Ireland. Tel: + 353(0)41 6872000

THIS DRAWING IS SUPPLIED IN CONFIDENCE AND THE COPYRIGHT THEREOF IS THE PROPERTY OF GLEN DIMPLEX. IT MUST NOT BE USED BY A THIRD PARTY WITHOUT PRIOR PERMISSION. © 2023

DRAWN BY	AR	A3	TITLE	ASSEMBLY
SERIES			DRG NO	400001290
SERIES DATE				
ISSUE				
PROJECT	E-MATRIX RGB			