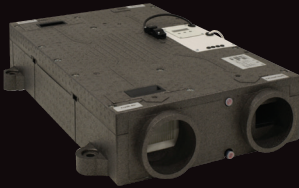
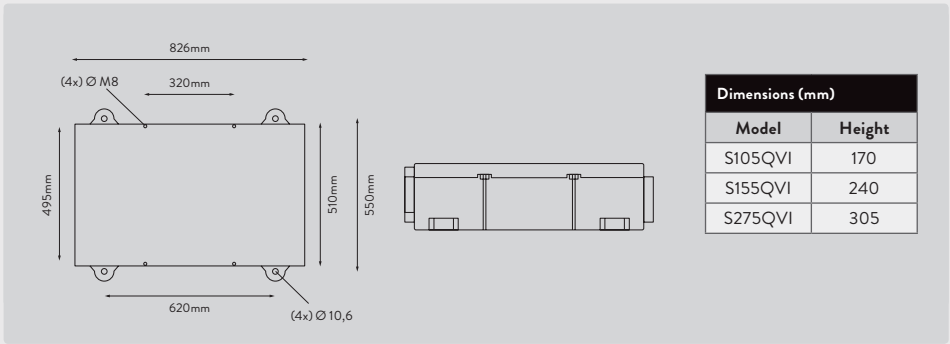


# Xcell Stratum S105QVI, S155QVI & S275QVI

## Compact, lightweight, low-profile horizontal heat recovery unit



Xcell Stratum heat recovery units are compact, low profile and extremely installer-friendly, being much lighter to handle than metal cased units. They incorporate a high efficiency heat recovery counterflow cell for heat recovery of up to 90%, and feature high efficiency F5 G4 filters and can be both ceiling or loft mounted. The B1 rated EPP structural material has a high U value, so no cold bridging and features integral fixing points for simple loft or ceiling mounting. Available in three variable speed performance models with winter defrost, summer bypass and multiple control feature options.



Product Features	S105QVI	S155QVI	S275QVI
Reference Number	92919AW	92920AW	92921AW
Timer		✓	✓
88% Heat Recovery Efficiency	✓	✓	
90% Heat Recovery Efficiency			✓
Summer Bypass	✓ Software emulated	✓	✓
EC Motor	✓	✓	✓
Constant Velocity Motor	✓	✓	✓
Passivhaus Approved		✓	✓

Product Selector	S105QVI	S155QVI	S275QVI
Reference Number	92919AW	92920AW	92921AW
Motor Type	EC	EC	EC
Maximum Supply/Extract Performance (FID, m <sup>3</sup> /h)	105	155	275
Maximum Supply/Extract Performance (m <sup>3</sup> /h @100Pa)	105	155	240
Power Usage Maximum (W) 220-240V AC 50-60Hz	70	110	193
Efficiency (%)	82	88	90
Speeds (adjustable)	3	3	3
Speed Control Type	Multi-programmable	Multi-programmable	Multi-programmable
Noise (dBA@3m)	33/39/54	31/37/46	32/39/47
Spigot Diameter (mm)	125	125	160
Installation Orientation	Horizontal	Horizontal	Horizontal
Body Material	EPP B1 Fire Rated	EPP B1 Fire Rated	EPP B1 Fire Rated
Weight (kg)	10	11	12

